

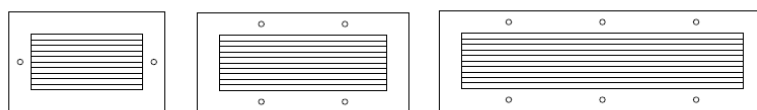
AIR GRILLES AND DIFFUSERS INSTALLATION

For the correct operation of the air grilles and diffusers we must install them properly.
See below the possible fixing ways for the majority of types we produce:

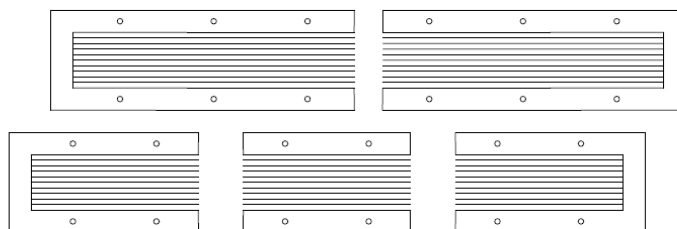
- A: Fixing with visible screws**
- B: Secret fixing of accessible grilles**
- C: Secret fixing with «Π» or with spring clips**
- D: Special cases**

A. FIXING WITH VISIBLE SCREWS

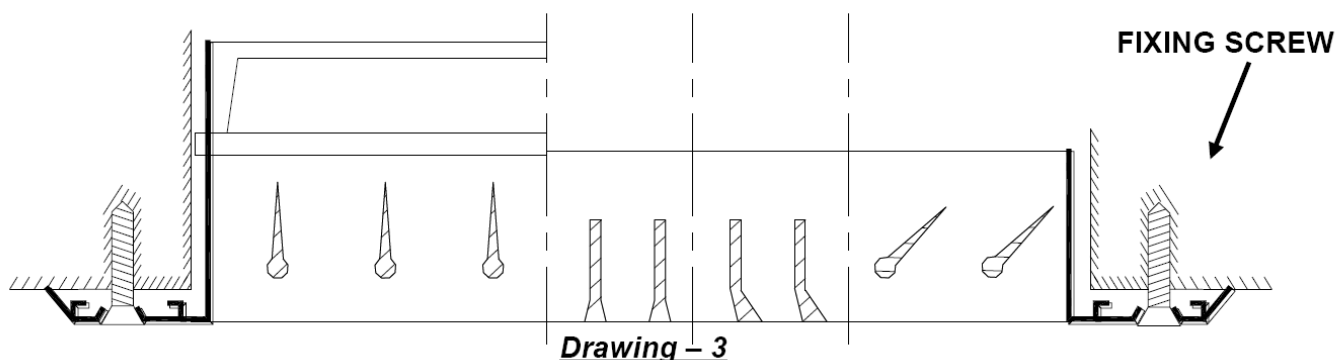
In this case the grille frame has holes from which we fix it with screws. With this way we have a very stable fixing. The number of holes varies according to the grille size (Drawing - 1). If the size of the grille is big we can make the grille in 2 parts. In the grilles E12, E17 and the diffusers S, SL this is possible without intermediate flanges (Drawing - 2). The fixing with visible screws is possible for all types of grilles/diffusers. The fixing way with visible screws is visible in detail for some grilles types in the Drawing - 3.



Drawing - 1



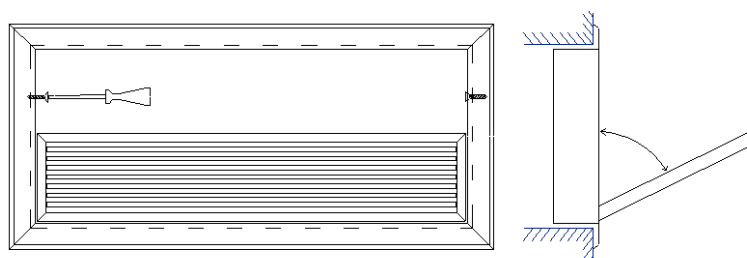
Drawing - 2



Drawing - 3

B. SECRET FIXING OF ACCESSIBLE AIR GRILLES (-E)

In this case, we open the blades section and we connect with screws the neck of the grille to the plenum box, as seen in drawing No 4. This way there are no visible screws in the front of the grille. In the order after the grille type mention: -XT.



Drawing - 4

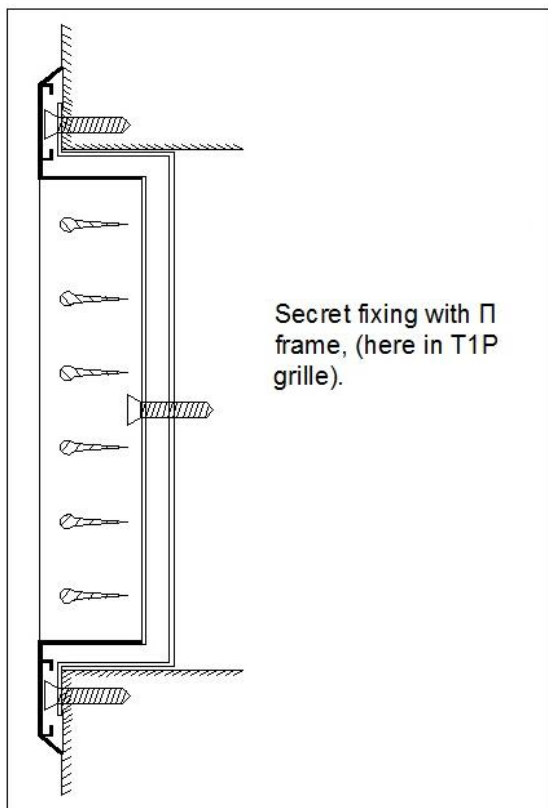
AIR GRILLES AND DIFFUSERS INSTALLATION



AEROGRAMMI S.A.
DESIGN AND MANUFACTURE OF GRILLES AND SPECIAL AIR CONDITIONING COMPONENTS



C1. SECRET FIXING WITH «Π» FRAME (-KSP)

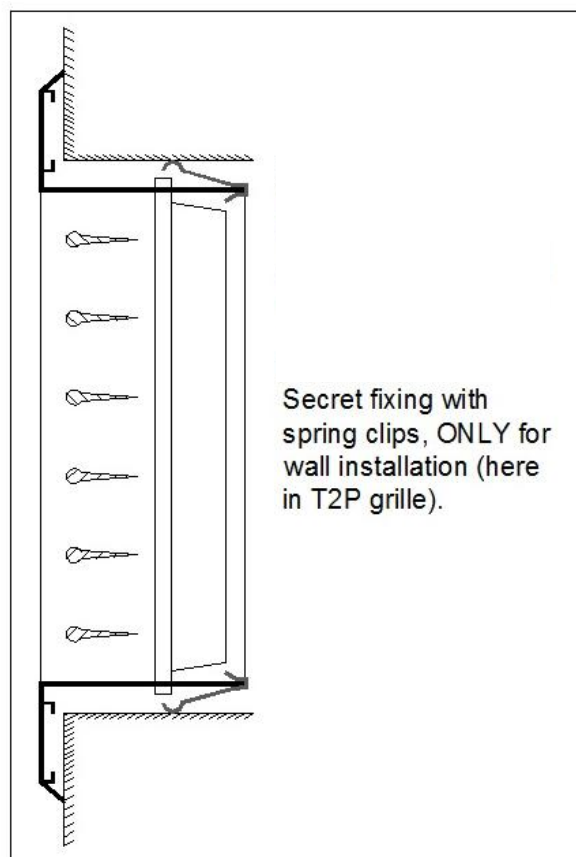


E12-KSP

C2. SECRET FIXING WITH SPRING CLIPS (-KSE)



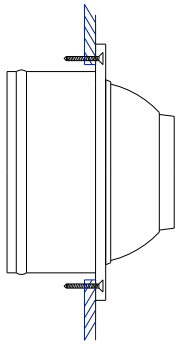
T2P-KSE



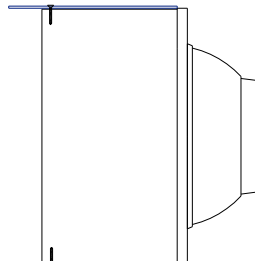
AIR GRILLES AND DIFFUSERS INSTALLATION

D. SPECIAL CASES

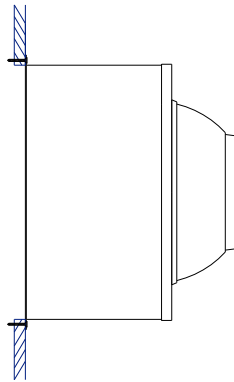
AMB



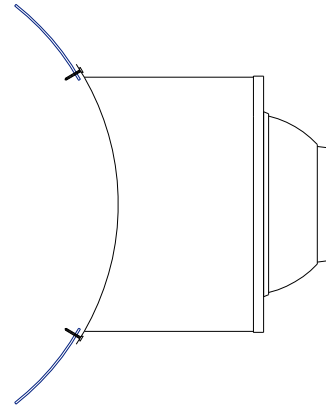
AMB - KO



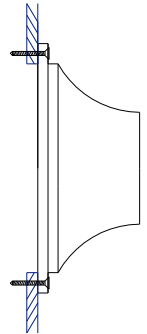
AMB - KL



AMB - KA



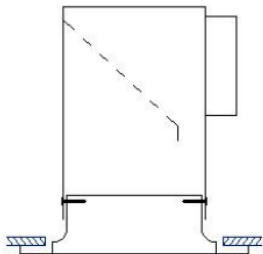
AMB - KSR



AMB - O

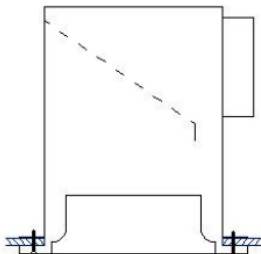
MLD & RF

(In cases 1 and 3 mention -XT in the order code)



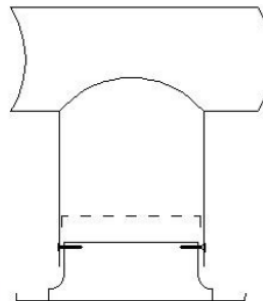
INSTALLATION IN
PLENUM BOX (A)

1



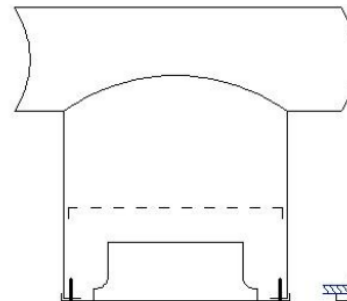
INSTALLATION IN
PLENUM BOX (B)

2



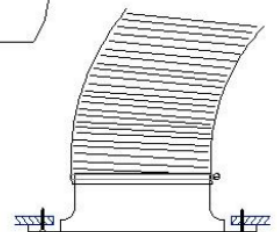
INSTALLATION IN
ROUND SLEEVE (A)

3



INSTALLATION IN
ROUND SLEEVE (B)

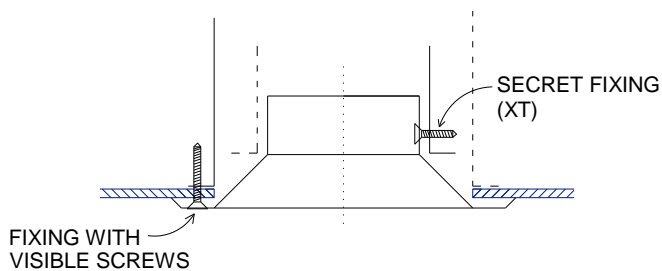
4



INSTALLATION WITH
FLEXIBLE DUCT

5

O



SL

