



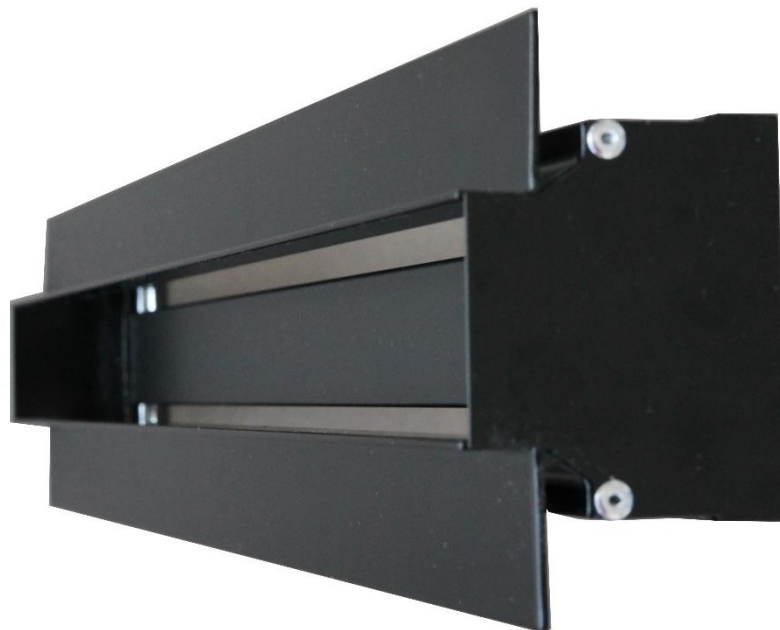
**AEROGRAMMI S.A.**

DESIGN AND MANUFACTURE OF GRILLES AND SPECIAL AIR CONDITINING COMPONENTS



**SLOT DIFFUSER**

**SLB-N**





# SLB-N

## SLOT DIFFUSER

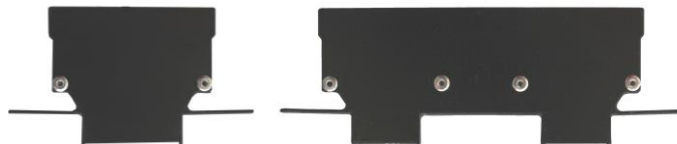
### OVERVIEW



**SLB-1-N**



**SLB-2-N**



**SLB-1-N**

**SLB-2-N**

The linear slot diffuser type SLB-N is used for supply or return air, in ventilation and air conditioning systems, for cooling or heating.

It is installed mainly in walls but it could be installed in ceilings.

Its appearance, without external flange, makes it ideal for architectural applications. The fact that there is not external visible flange helps to avoid condensations in cooling.

Consists by one (SLB-1-N) or two (SLB-2-N) slots which are produced in 5 different widths. Inside each slot there is a blade which adjusts the direction of the supply air. When the blade is in center position the supply air comes out vertical from the surface of the diffuser. In SLB-2-N between the two slots a piece of gypsum board must be installed. This way in the ceiling are visible two independent slots.

For the good operation of the diffuser the air inlet spigots of the plenum box must be in the side and at least one per meter of diffuser.

### MATERIALS

The slot diffuser is made by aluminum electrostatically coated in RAL color. The blade is made by aluminum in the color of the grille.

At the rear of the diffuser it is possible to add a black perforated equalizing grid.

The longest single piece is 2,5m so if the length is bigger than 2,5m it will be produced in more single pieces. The middle sections will not have end caps so the end product looks like one single item.

### INSTALLATION

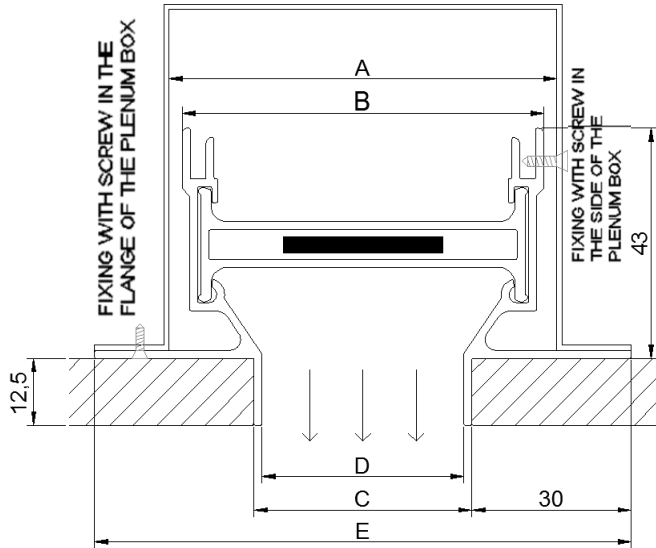
The installation of the diffuser is done by screw mounting in the neck or the flange of the plenum box. After this we install the gypsum board which is cutted vertical.



## DIMENSIONS

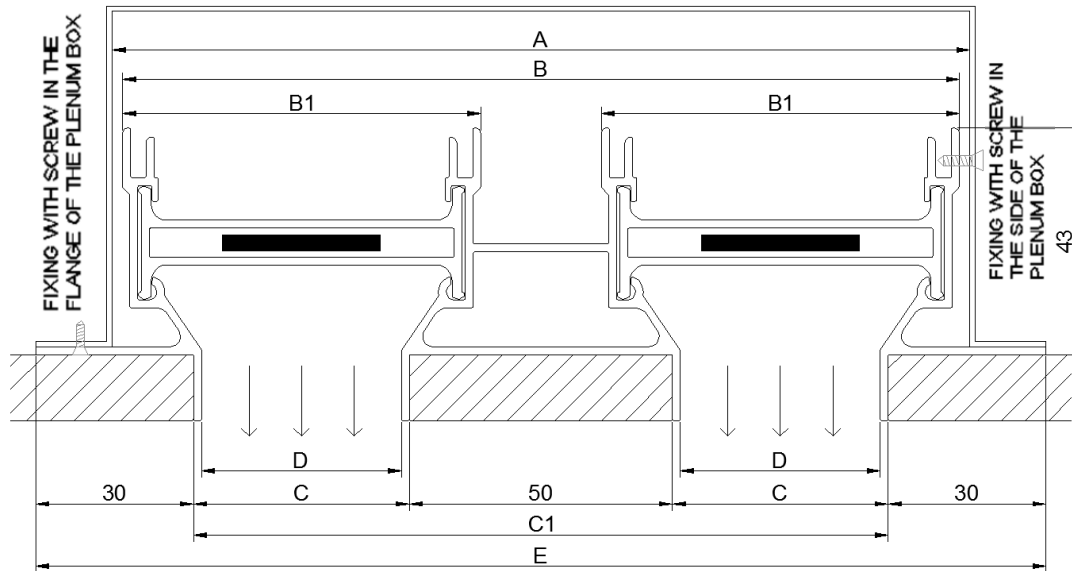
The basic dimensions of the slot diffuser SLB-N, for 1 or 2 slots and in relation with the slot width are shown in the drawings and tables below.

### SLB-1-N



SIZE	A	B	C	D	E
25	60	55	28	25	88
38	73	68	41	38	101
50	85	80	53	50	113
63	98	93	66	63	126
76	111	106	79	76	139

### SLB-2-N

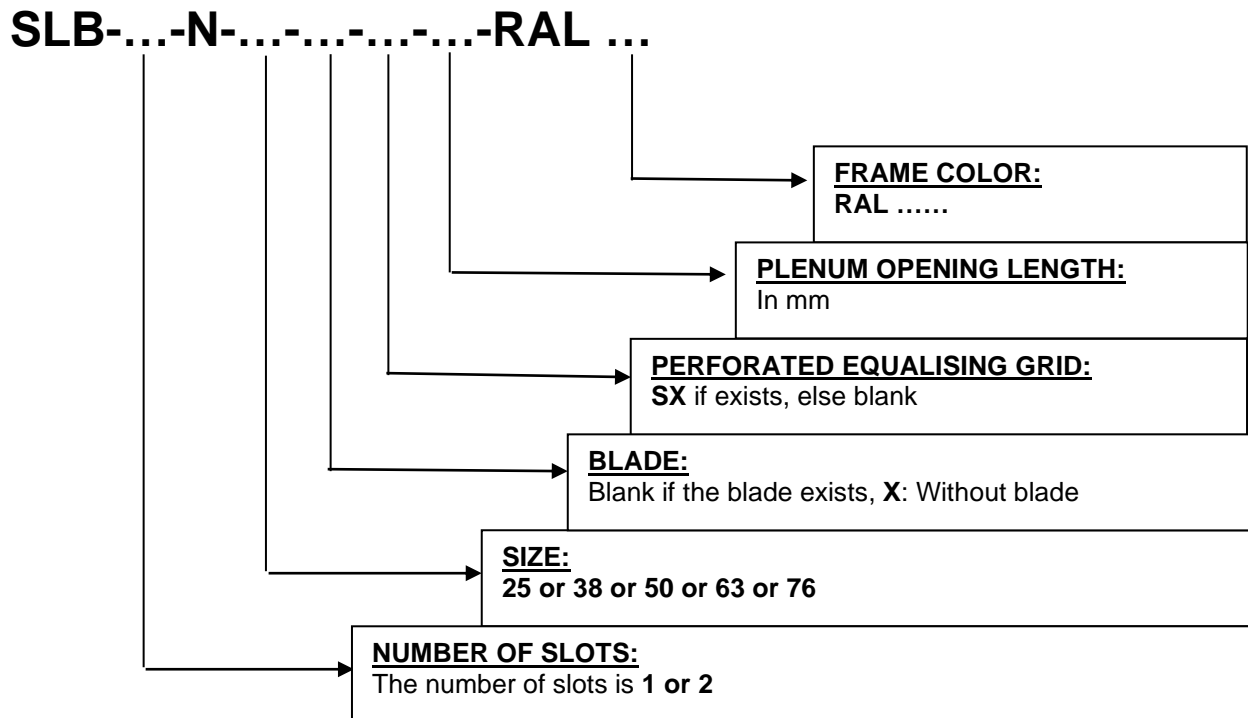


SIZE	A	B1	B	C	C1	D	E
25	138	55	133	28	106	25	166
38	163	68	158	41	132	38	192
50	188	80	183	53	156	50	216
63	213	93	208	66	182	63	242
76	239	106	234	79	208	76	268



### WAY OF ORDER:

For the order of the SLB-N slot diffusers we use the combination of numbers and letters below:



**EXAMPLES:** SLB-1-N-38- -SX-1500-RAL 9005  
SLB-2-N-25-X- -5350-RAL 9005